

# MAXIMUS-3

---

★ ★ ★

---

JT/GLADIATOR TRUCK

## JT GLADIATOR SPORT BAR

PART #: JT4010SR

### INSTALLATION GUIDES

Estimated Install Time: 4 Hours

---

PLEASE MAKE SURE YOU READ AND UNDERSTAND THE ENTIRE INSTALLATION GUIDE BEFORE YOU START. WE EXPECT YOU TO HAVE BASIC MECHANICAL ABILITIES TO PERFORM THIS INSTALLATION.

WE RECOMMEND THAT YOU SEPARATE AND IDENTIFY ALL THE PARTS AND HARDWARE KITS YOU RECEIVED WITH YOUR SHIPMENT BEFORE YOU PROCEED.

---



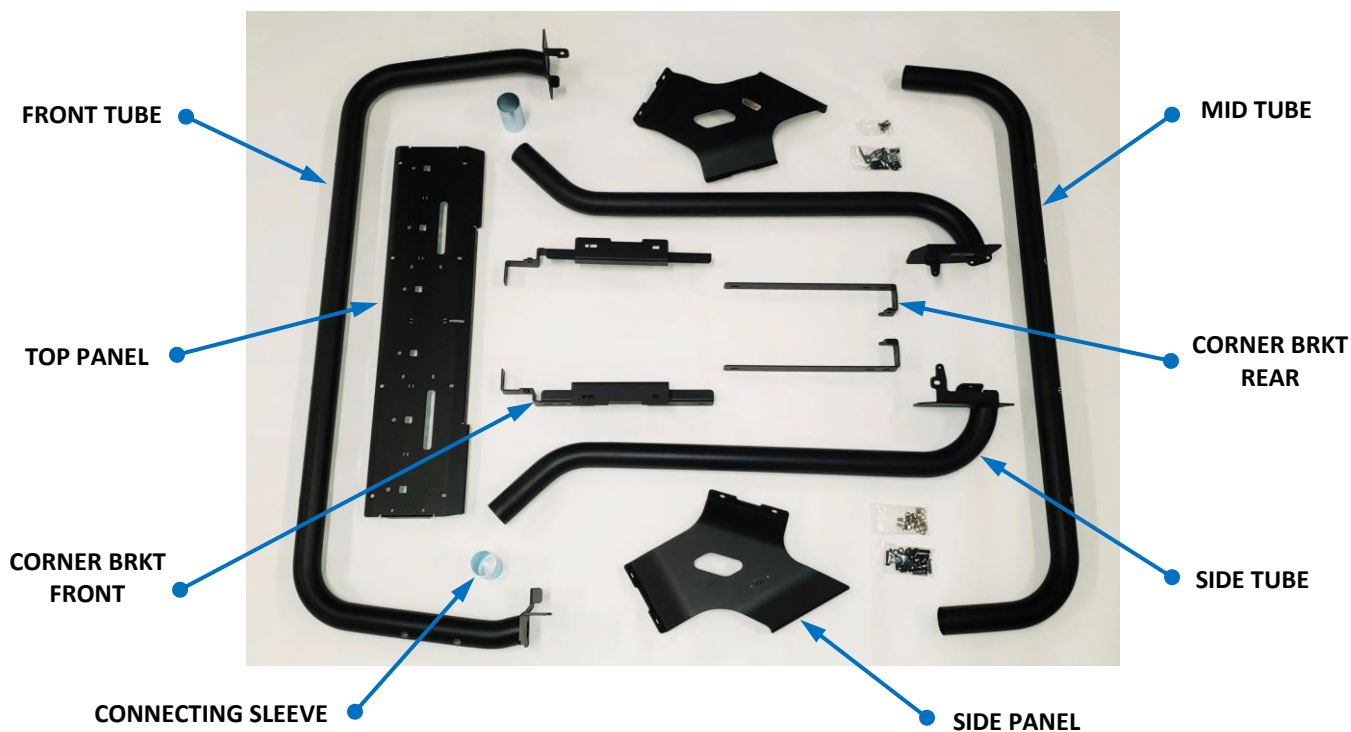
---

## IMPORTANT

Follow these instructions precisely. Maximus-3 is not liable for any damage caused by improperly installed products. It is the purchaser's responsibility to ensure both the installation and maintenance are performed properly as set forth in this guide. We recommend using anti-size paste on all non-thread lock bolts.

---

<b><u>Component List:</u></b>	<b><u>Qty</u></b>	<b><u>Hardware Kits:</u></b>	<b><u>Qty</u></b>
Front Tube	1	<b>Corner Brackets to Vehicle (Option: Tie-down Strips)</b>	
Mid Tube	1	M8 x 25 flanged Hex Bolts	2
Side Tubes – LHS & RHS	1	M6 x 35 Hex Bolts – Black	10
Corner Brackets – Front - LHS/ & RHS	1	M6 x 16 Washers - Black	10
Corner Brackets – Rear - LHS & RHS	1		
Side Brace Panels – LHS & RHS	1	<b>Tubes to Vehicle (Front &amp; Sides)</b>	
Top Brace Panel	1	M8 x 25 Button Socket Bolt – Black	8
Joining Sleeve Tubes	2	M8 x 16 Washers – Black	8
Option: Tie-down Strips – LHS & RHS	1	M8 Flag Nut – Zinc	2
		M8 Chancel Nut – Zinc	4
<b><u>Tools Required:</u></b>		<b>Aluminum Brace Panels (Sides, Top)</b>	
✓ Basic Hand Tools		M8 x 30 Button Socket SS Bolts – Black	16
✓ Metric Drive Sockets		M8 x 14 Stainless Steel Washer	16
✓ Metric Open Wrenches		5/16 Carriage Bolt - SS	4
✓ Metric Allen Keys Set		5/16 Washers - SS	4
✓ Power Drill		5/16 Acorn Nuts - SS	4
✓ 1/8" & 3/8" Drill Bits		<b>Rivet-nut Kit</b>	
		M6 x 35 Hex Bolt – Black	1
		M6 Nut Certs	3
		M6 Flat Washer	2



## INSTALLATION STEPS

WE RECOMMEND USING ANTI SEIZE PASTE ON ALL BOLTS.

### 1. REMOVE SIDE FACTORY SIDE BED RAILS.

If your vehicle did not come with factory Bed Rails option, skip to step 2.

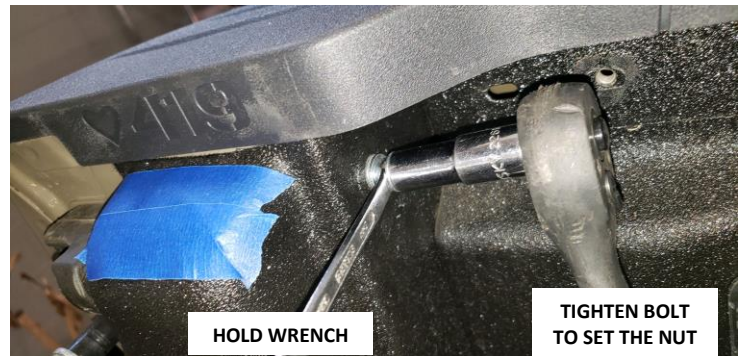
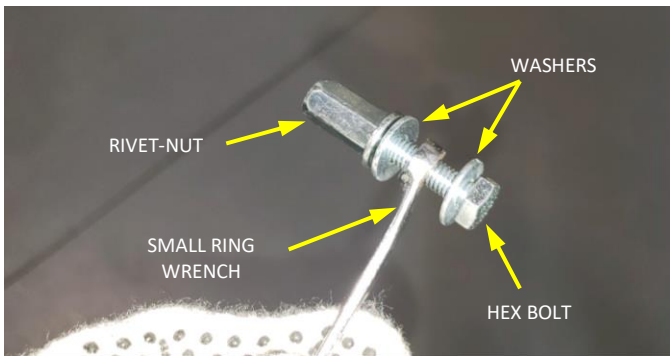
Using 10MM socket remove side Bed Rails. Use a pry bar or flat screwdriver to brake double-sided tape between the rails and the bed.



### 2. INSTALL M6 RIVET-NUTS.

Skip to step 3 if your vehicle came with rivet-nut installed for factory Bed Rails.

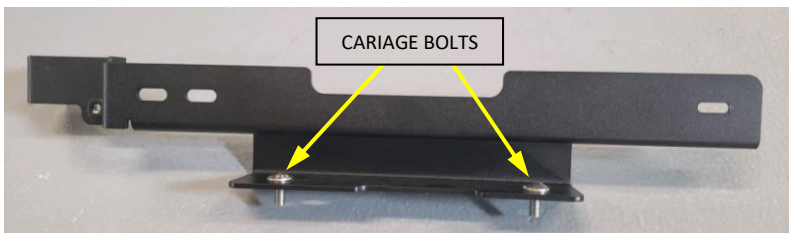
Install M6 Rivet-nut in hexagonal hole in the bed rear corner as shown below.



### 3. INSTALL CORNER BRACKETS TO THE VEHICLE (OPTIONAL: MAXIMUS-3 TIE-DOWN STRIPS).

Install Front Corner Brackets to vehicle using 10MM and 13MM socket/wrench as shown below. Do not tighten for now.

**Note:** You must insert carriage bolts in the two rectangular holes in the brackets (not the square hole) before you place them over the plastic trim, ... refer to pictures below. Please verify by placing the Side Panel over bolts to line up.



Install Rear Corner Brackets to vehicle using 10MM and 13MM socket/wrench as shown below. Do not tighten for now.





#### 4. MARK AND DRILL FRONT AND REAR TUBES MOUNT LOCATIONS ON THE VEHICLE.

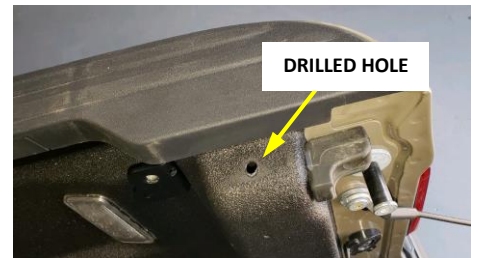
Place front Riser Tube on the vehicle as shown, push flanges forward against front wall to locate and temporally bolt down using M8 Button Socket Bolts.

Mark top mounting holes as shown and drill starting with 1/8" pilot holes then drill final holes with 3/8" drill bit. Remove the Tube and touch up the holes with protective paint to prevent rusting.



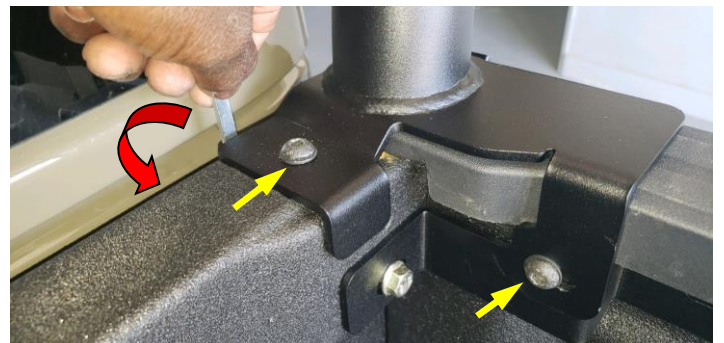
Place Rear Side Tube on the vehicle as shown, align tube flanges to corners of the bed and Corner Brackets to locate and temporally bolt down using M8 Button Socket Bolts.

Mark top mounting holes as shown and drill starting with 1/8" pilot holes then drill final holes with 3/8" drill bit. Do both sides and touch up the holes with protective paint to prevent rusting.



#### 5. ASSEMBLE FRONT RISER TUBES TO THE VEHICLE.

Install Front Riser Tube using M8 x 25 Button Socket Bolts, Washers and Chanel nuts (or Flag Nuts) supplied, as shown. Now tighten Corner Brackets bolts.



#### 6. ASSEMBLE SIDE PANELS TO FRONT RISER AND FRONT BRACKETS.

Using M8 x 30 Button Socket SS Bolts, washers and Acorn Nuts provided, bolt on Side Panels as shown below.



## 7. ASSEMBLE MID TUBE AND SIDE TUBES.

**First remove rear taillights** using 8MM socket/wrench to remove screws holding the lights and disconnect by pulling backwards to unclip – leave the lights hanging from the wiring for now.  
Using M8 x 25 bolts, washers and Chanel nuts provided, bolt Side Tubes to the vehicle and Corner Brackets as shown below. Insert Chanel nuts up through taillight openings.  
Now tighten all Corner Brackets bolts.



Using M8 x 30 Button Socket SS Bolts and washers bolt Side Tubes to Aluminum Side Panels as shown below.  
Insert Connecting Sleeve Tubes in the Side Tubes on both sides.  
Using M8 x 30 Button Socket SS Bolts and washers connect Mid Tube and bolt to Side Panels as shown below.



## 8. ASSEMBLE TOP BRACE PANEL.

Using M8 x 30 Button Socket SS Bolts and washers assemble Top Brace Panel, as shown below. Total of 8 bolts.



Check and tighten all bolts.

## 9. OPTION: INSTALL BED LIGHTS AND/OR BRAKE LIGHTS.

Install LED Bed Lights (white) using M4 Stainless Steel Screws provided. Wire as desired.  
Install LED Marker Lights (3 lights) using M4 Stainless Steel Screws provided. Wire and connect as desired.

**Your installation is complete. If you have questions regarding this installation, please contact us at [customerservice@maximus-3.com](mailto:customerservice@maximus-3.com), or call 248-6061745**