

MAXIMUS-3



FORD BRONCO/RAPTOR

WINCH MOUNT SADDLE

(Fits Factory Modular Steel Bumper)

PART #: BR1003WS

Approximated Installation Time: 2-3 Hours

Installation Difficulty Level: Easy

INSTALLATION GUIDES

PLEASE MAKE SURE YOU READ AND UNDERSTAND THE ENTIRE INSTALLATION GUIDE BEFORE YOU START. WE EXPECT YOU TO HAVE BASIC MECHANICAL ABILITIES TO PERFORM THIS INSTALLATION.

WE RECOMMEND THAT YOU SEPARATE AND IDENTIFY ALL THE PARTS AND HARDWARE KITS YOU RECEIVED WITH YOUR SHIPMENT BEFORE YOU PROCEED TO DISASSEMBLE YOUR VEHICLE.

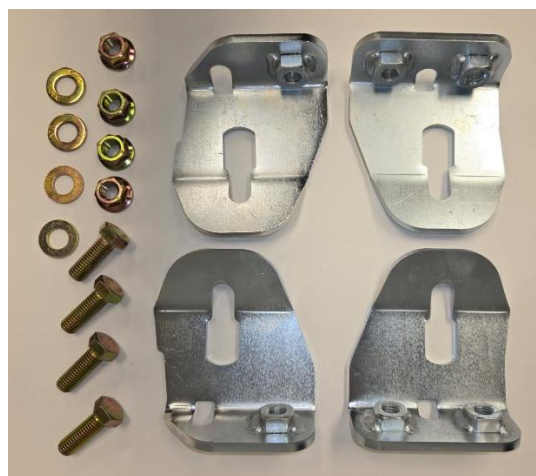


IMPORTANT

Follow these instructions precisely. Maximus-3 is not liable for any damage caused by improperly installed products. It is the purchaser's responsibility to ensure both the installation and maintenance are performed properly as set forth in this guide. We recommend using anti-size paste on thread bolts.

COMPONENT LIST	QTY
FAIRLEAD BRACKET	1
SLIDER TABS	2
BACK PLATES	2
PUCKS	4
OPTIONAL COMPONENTS	
FRAME HORN BRKT INNER L	1
FRAME HORN BRKT INNER R	1
FRAME HORN BRKT OUTER L	1
FRAME HORN BRKT OUTER R	1

HARDWARE LIST	QTY
M12 FLANGE BOLTS	4
M12 FLANGE NUTS	4
7/8 HITCH PINS	2
3/8 BOLTS	3
3/8 WASHERS	3
3/8 SERRATED NUTS	3
3/8 CARRIAGE BOLTS	2
3/8 WASHERS	2
3/8 NYLOC NUTS	2
OPTION: M12 HEX BOLT	4
OPTION: M12 SERRATED HEX NUT	4
OPTION: FLAT WASHER	4



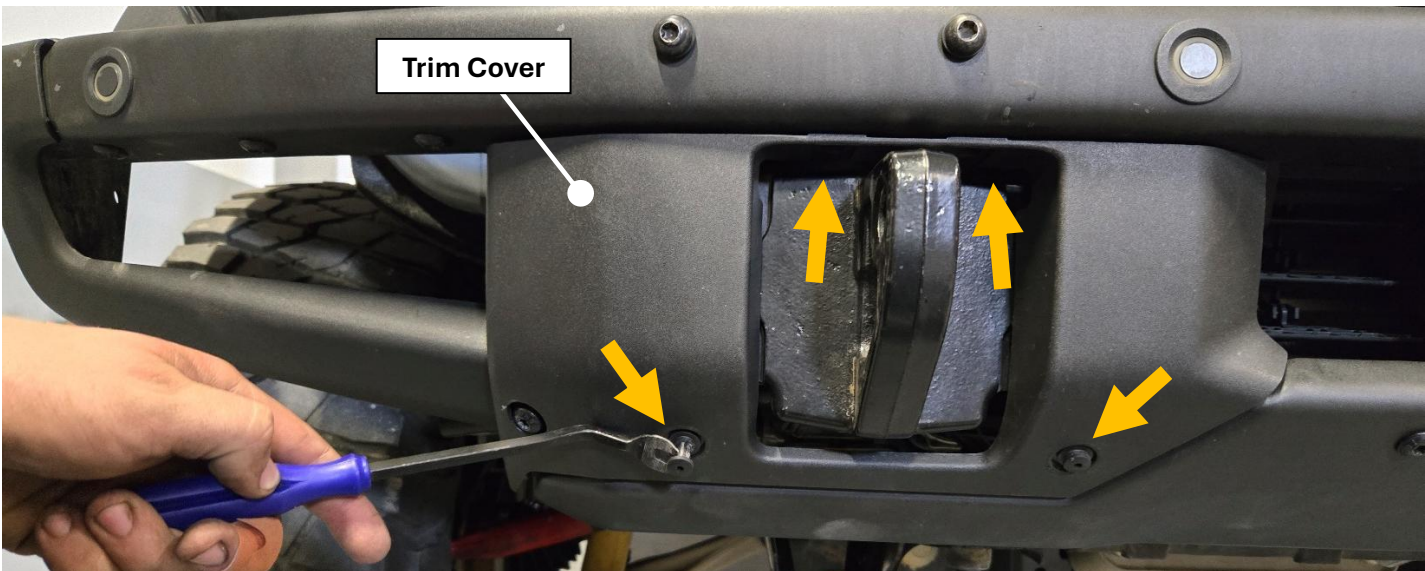
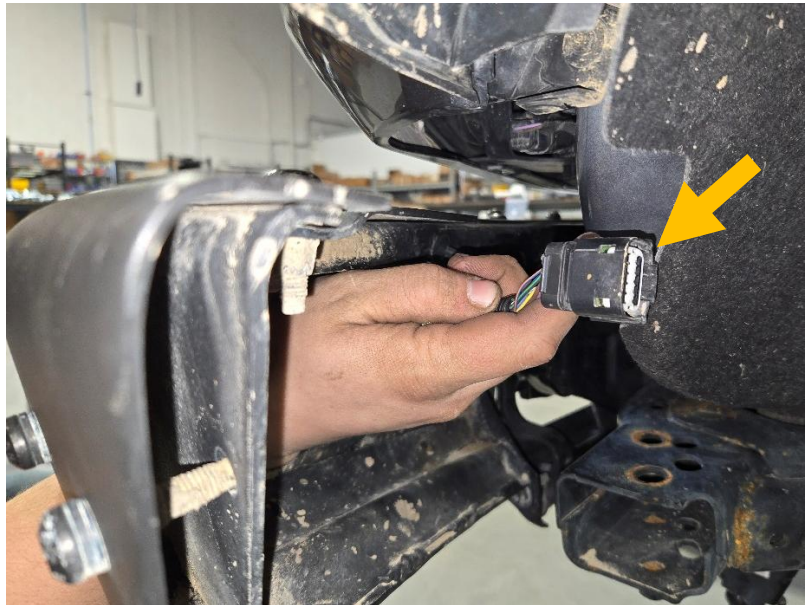
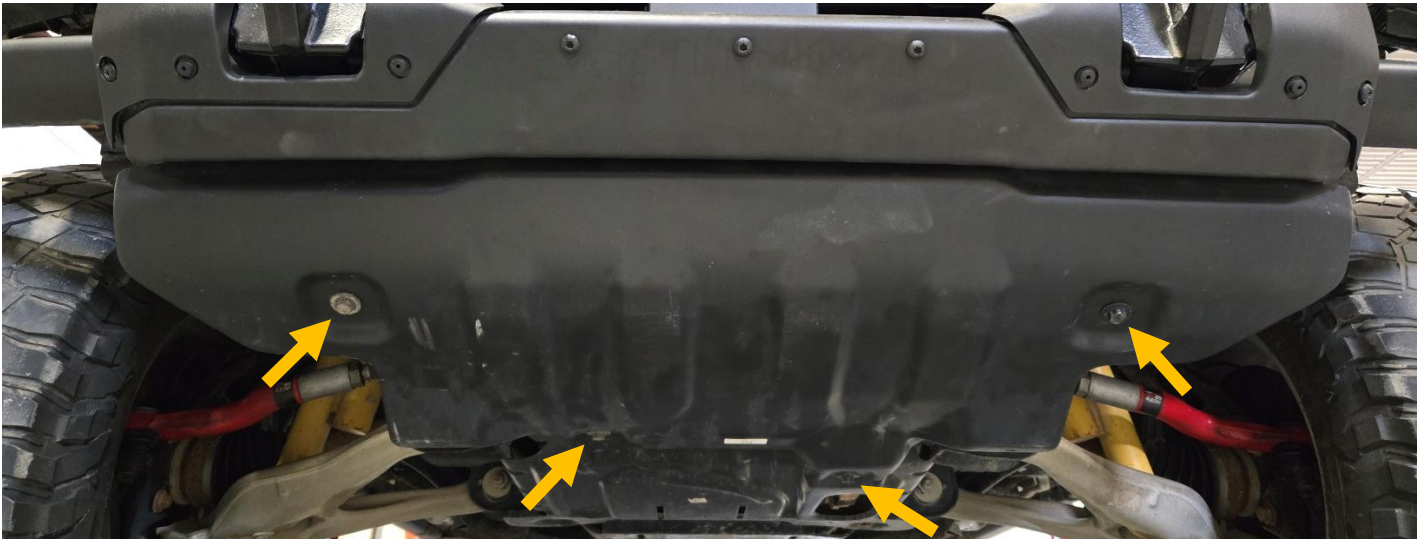
INSTALLATION STEPS

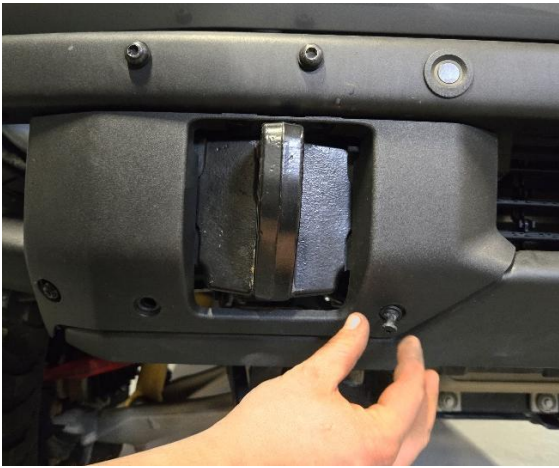
If you have frame horn reinforcement brackets already installed, **skip to step 2.**

STEP 1: Install Maximus-3 Frame Horn Reinforcement Brackets

- A. Remove the skid plate** using a 15mm Socket. Save all the factory bolts for reinstallation later.
- B. Disconnect the main wiring harness** located behind the bumper on the driver side.
- C. Remove plastic trim covers** from each side of the bumper.

For factory steel bumper you need to remove four (4) clips from each side and then pull the covers off.
Save all the factory clips for reuse later.

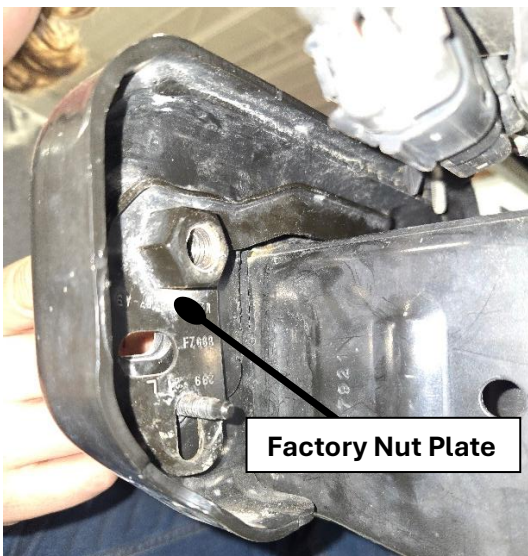




D. Remove the bumper by unbolting the 6 bolts (3 on each side) that hold the OEM bumper in place using a 15mm socket. Save all the factory bolts for reinstallation later.



E. Remove the mounting nut plate from behind the frame horns, one on each side. You will not need the brackets again for this installation.



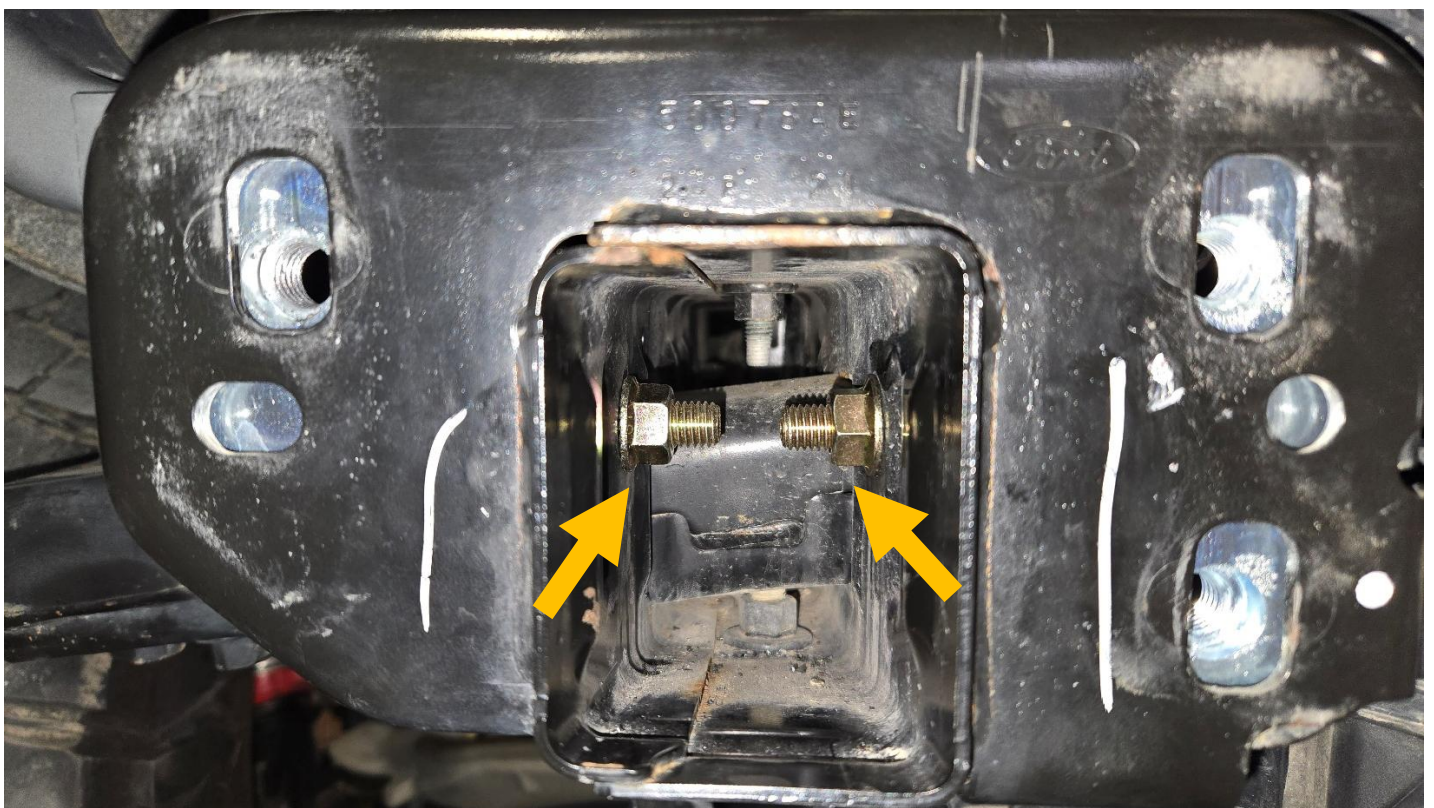
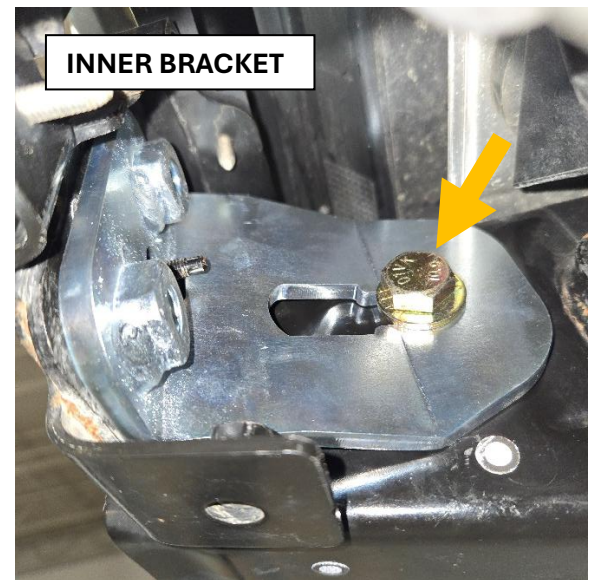
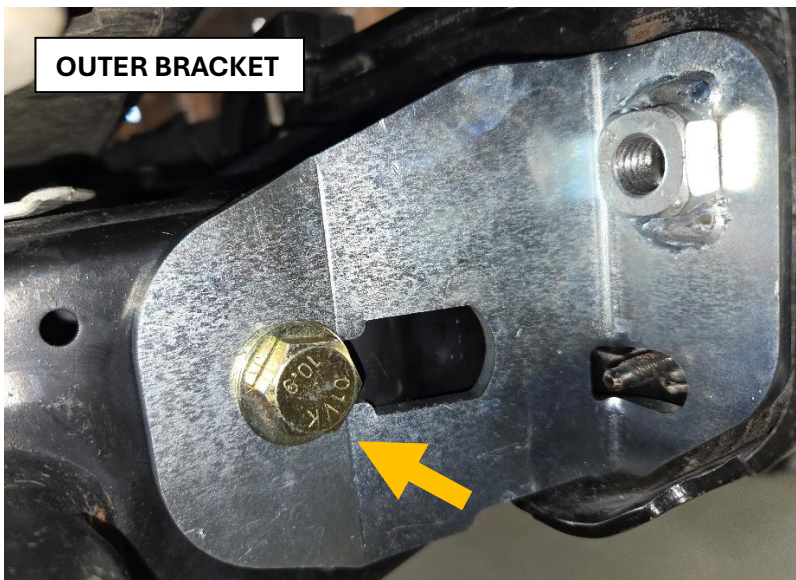
F. Install the Maximus-3 brackets as shown below using M12 bolt, serrated nuts and washers supplied. Note outer and inner brackets, driver and passenger side brackets, and their orientation. The single nut bracket goes on the outside of frame.



If mounting holes in the frame are small to fit the M12 bolt, please drill them out with a ½" drill bit.

Insert the bolt and washer from outside and the serrated flange nut from inside the box frame.

Align the nuts with the slotted mounting holes on the frame horns and loosely tighten the bolts using a 19mm socket/wrench, just enough to stay aligned behind the frame horns.



G. Reinstall your bumper and skid plate using your original bolts removed in step A and D.

If you have an aftermarket bumper, please make sure that the bumper bolts are M12x1.75 thread to match the threads in the Maximus-3 brackets.

Install the bumper plastic covers but leave the clips out if you are installing Maximus-3 winch mount.

H. Tighten all bolts to spec:

Bumper bolts = 60 lb.ft

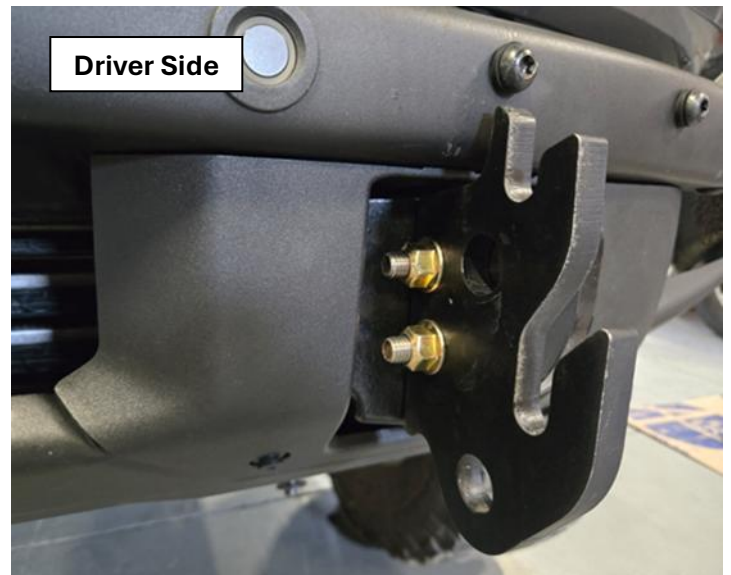
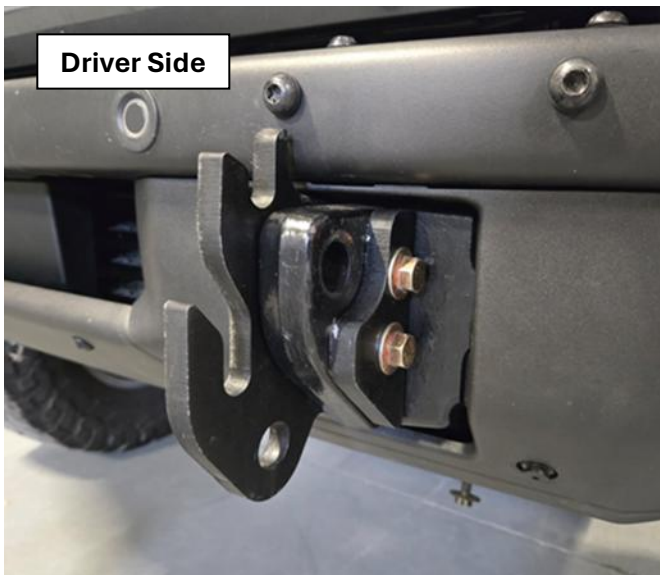
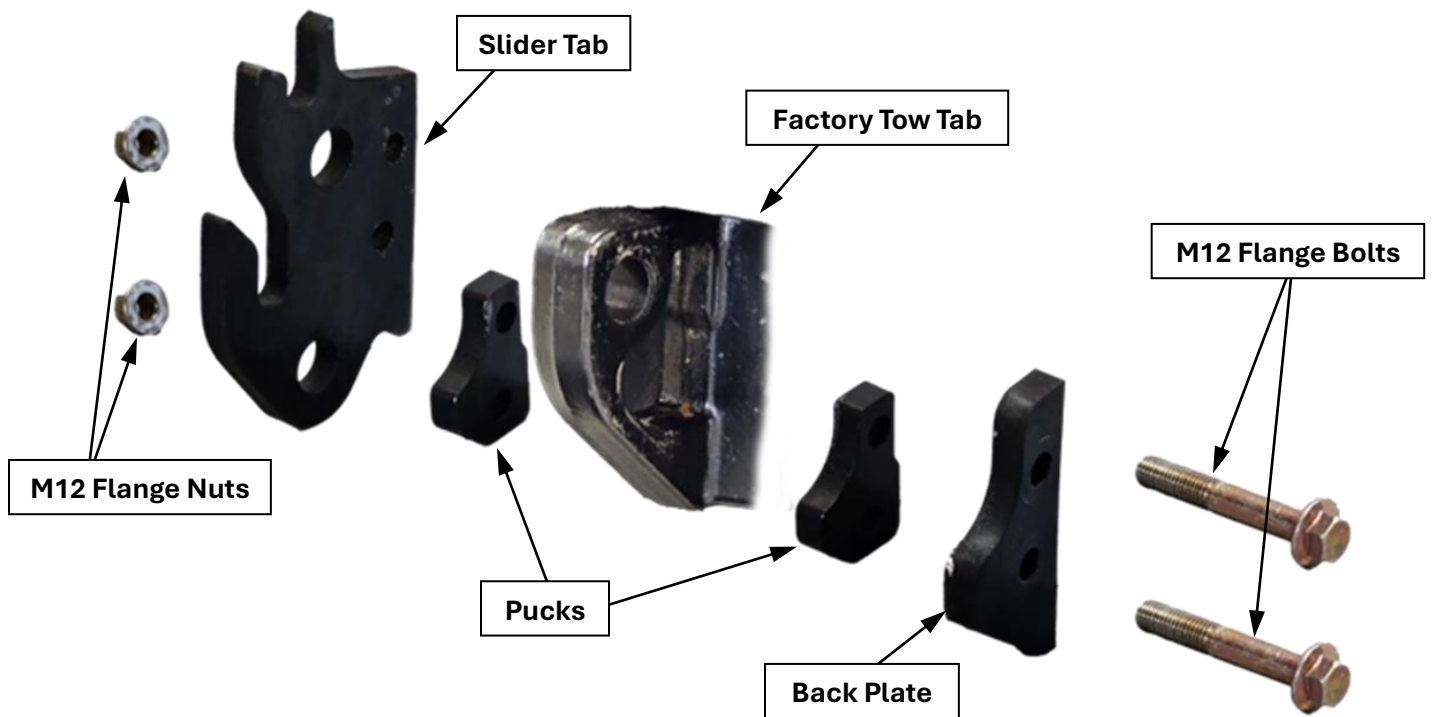
Maximus-3 brackets bolts = 84 lb.ft

STEP 2: Install Maximus-3 Winch Mount Saddle (refer to YouTube video on the website)

A. With the bumper plastic pin clips removed, pull the plastic cover out but leave hanging in place as shown below. This is because the cover cannot be reinstalled later after Maximus-3 mounting tabs are installed in the next step.



B. For the driver side: assemble the Slider Tab, 2 Pucks and Back Plate as shown below using M12 bolts and nuts provided. Make sure you do this with the plastic cover in place as you cannot add it later. Please note the order and orientation of the components.

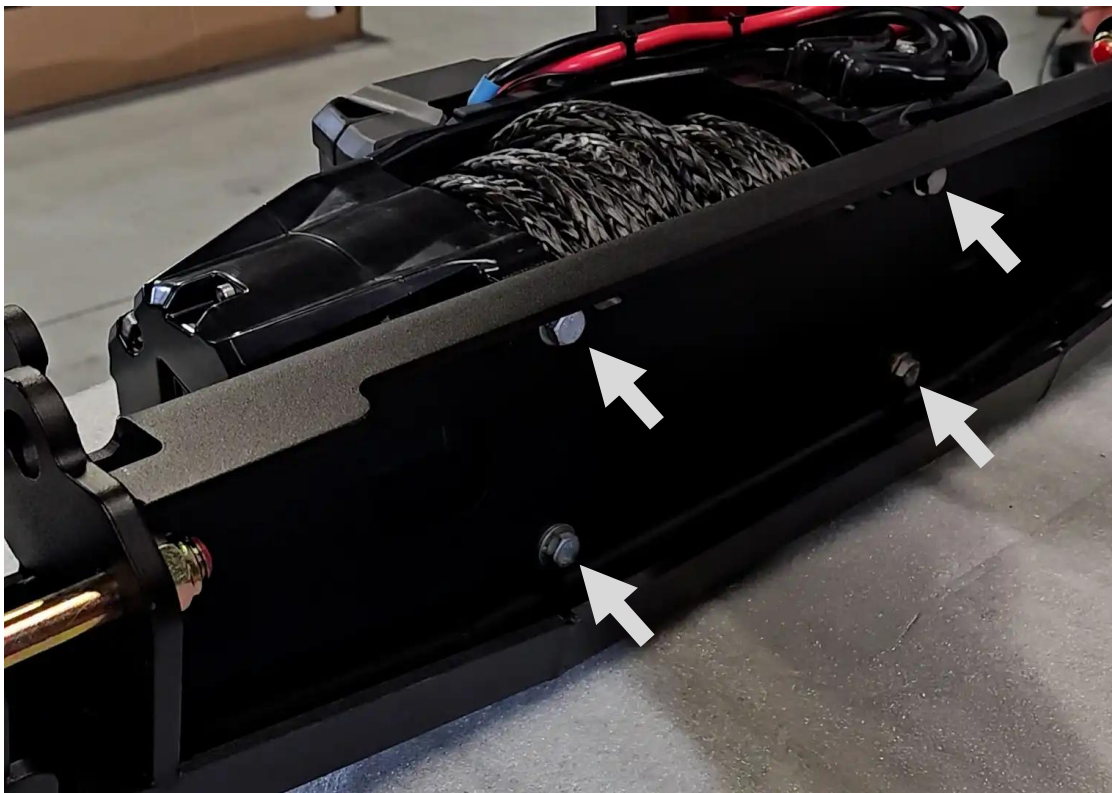


Repeat the same on the passenger side.

- C. Using a 16mm wrench on the bolt and 18mm socket, extension on the nut, torque all four (4) bolts to 88 lb.ft.** Slide the 18mm socket and extension between the bumper and the plastic trim cover, as shown in the picture below.



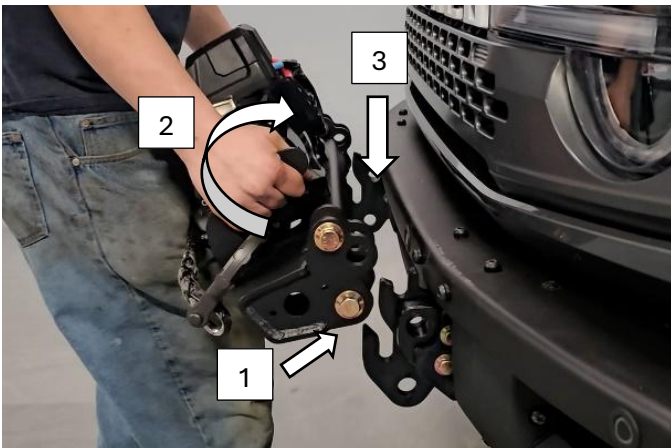
- D. Clip the plastic trim covers back in place and insert the pin clips, on both sides.
- E. Assemble your winch to the Maximus-3 winch mount using the hardware supplied with your winch kit following the manufacturer instructions, as shown below.



- F. Bolt your fairlead to the fairlead bracket** using two (2) carriage bolts, washers and nuts supplied, as shown below. Carriage bolts go through the square holes from the back side of the bracket.
- G. Bolt the fairlead bracket to the Maximus-3 winch mount** using three (3) bolts, washers and serrated flange nuts supplied, as shown below.



- H. Splice your winch power cables** (black and red) adding a battery quick connect/disconnect connector between. You can route your wire to the battery as desired.
- For best results and cable length reach, terminate the winch side of the connector on the driver side.
- I. Connect your winch saddle assembly** to your ford bronco as shown below and then insert the 7/8" hitch pins and secure with safety pins on both sides.
- Please refer to the YouTube video on the website.**





WARNING



We offer a **Limited Warranty** on products engineered and manufactured by **MAXIMUS-3**.

Our **Warranty** covers all workmanship, material, and paint/finish defects for a period of 1 year (12 months) from the time of initial purchase.

All Maximus-3 aftermarket products and components must be installed as the manufacturer instructs. Maximus-3, LLC will not be responsible for any modification, improper installation, alteration, tampering, neglect, abuse or misuse of our products. Only use Maximus-3 installation guide to add, alter, or fabricate factory parts to incorporate Maximus-3 products. We will be happy to answer any questions concerning the design, function, and correct use of our products by calling 248-821-6654. It is ultimately the user's responsibility to have all fasteners properly retorqued after the first 100 miles and then every 3,000 miles thereafter. Tire carrier must be inspected for looseness every 1,000 miles. Using your vehicle off-road will put extreme stress on the vehicle and components. After driving off-road, always check for damage and wear to components, accessories, and equipment. Completely inspect your vehicle including wheels, tires, tire carrier, roof rack, and front set up. Check all threaded

MAXIMUS-3 provides detailed installation instructions for every product. It is the responsibility of the purchaser / installer to ensure these instructions are followed properly. MAXIMUS-3 will not be responsible for damage caused by misuse, altered or improperly installed products. MAXIMUS-3 will not cover paint or labor costs for damaged items. The warranty is not transferable and covers all items ordered on or after December 1, 2012 with a valid original receipt. Warranty covers all components manufactured by MAXIMUS-3 unless otherwise specified on individual product listings.

3 Year Manufacturer Warranty

Maximus-3 products are warranted to be free from structural defects. All metallic components will carry 3-year manufacturer structural warranty. All warranty claims shall be issued in replacement of the original part or in -store credit. No refunds will be issued in cash, check or credit card payments.

ANY PACKAGES BEING SENT/RETURNED TO MAXIMUS-3 WITHOUT RETURN MERCHANDISE AUTHORIZATION (RMA) NUMBERS WILL BE REFUSED AND RETURNED TO SENDER.

RETURN POLICY

(Procedures for Returning or Exchanging Product)

PRODUCT MUST BE RETURNED TO THE ORIGINAL PLACE OF PURCHASE – Please refer to your original invoice.

Returns and Exchanges

At MAXIMUS-3 we strive to get your order to you complete, undamaged and 100% correct. Your satisfaction is guaranteed. Products can be returned within 15 days of shipment if they are unused, uninstalled, unpainted and in new and saleable condition. Returned products need to be in their original packaging with all parts and instructions included. All returns of non-defective, non-damaged or special-order parts are subject to a 15% restocking fee, unless we made an error.

All returns require a "Return Merchandise Authorization" (RMA) number from MAXIMUS-3 or one of our Distributors.

Whether we have made an error, you wish to exchange something, or there is a warranty claim, an RMA number is required. This number must be written on the outside of the returned package. Please allow five (5) business days for refunds to appear on your credit card statement. **No returns will be accepted on modified, "Custom" or "Special Order" items.** Item(s) must be received within 30 days of the RMA issue date; otherwise, the Return Merchandise Authorization will be voided.

Damaged Merchandise

Upon receiving your order, open the carton(s) and thoroughly inspect the contents. If any package arrives and shows signs of external damage, you may choose not to accept it. You may refuse it and require your seller to advise you of their procedure to follow. If there was damage during shipment, contact us so that a claim can be filed. Please keep all packaging materials should the carrier wish to inspect them.

Truck Freight Shipments

It is imperative to make a note of any damage on the delivery receipt at the time of delivery. **Open** and **inspect** the merchandise carefully **before** signing the delivery receipt. We can only initiate claims if the damage was noted at the time of delivery. Freight costs are all based on shipments to commercial addresses (with a dock), if you require shipment to a residential address, additional charges may be applied to the order total.

Products

Product specifications, availability and pricing are all subject to change without notice. National, State, Provincial or local laws and regulations may prohibit the removal or modification of stock vehicle components, or the addition of some of our products for on road use. It is the responsibility of the purchaser to ensure that the use of purchased products follows all laws and regulations.