

MAXIMUS-3



JK WRANGLER

STINGER BAR

(Fits JK Wrangler with OEM/Factory Hard Rock Edition Steel Bumper)

PART #: HR1001SN, HR1002SS, HR1003SR

INSTALLATION STEPS

Estimated Install Time: 1 Hour

PLEASE MAKE SURE YOU READ AND UNDERSTAND THE ENTIRE INSTALLATION GUIDE BEFORE YOU START. WE EXPECT YOU TO HAVE BASIC MECHANICAL ABILITIES TO PERFORM THIS INSTALLATION.

WE RECOMMEND THAT YOU SEPARATE AND IDENTIFY ALL THE PARTS AND HARDWARE KITS YOU RECEIVED WITH YOUR SHIPMENT BEFORE YOU PROCEED.



IMPORTANT

Follow these instructions precisely. Maximus-3 is not liable for any damage caused by improperly installed products. It is the purchaser's responsibility to ensure both the installation and maintenance are performed properly as set forth in this guide. We recommend using anti-size paste on all non-thread lock bolts.

Component List

	Qty
Stinger Bar	1
Optional: LED/Auxiliary Light Brackets Kit	1
Bumper Reinforcement Brackets Kit L/R	1

Hardware Kit

M6 x 30 Button Head Bolts – Stainless	6
M6 Flat Washers – Stainless	6
M6 Flanged Nuts – Zinc	4

Tools Required:

Your Basic Hand Tools
Metric Drive Socket (13MM, 10MM)
Allen Keys (L shape), T30 Torx keys,
Phillips Screwdriver



INSTALLATION STEPS

If you have a winch already installed, go to step (B)

1- Remove the Winch-delete Cover Plate (Close-out Plate)

- *Cover the grille of your Jeep with a blanket or a mat to avoid surface damage (Recommended).*
- A. Using T30 torx bit remove the eight (8) cover plate bolts, four (4) in front and two (2) on each side.
- B. Carefully remove the cover plate and place it on a protective surface to avoid surface damage.



2- Remove U-nuts from the Bumper and the Cover Plate

If you are also installing a winch go to step B below.

▪ For No-winch Install:

- A. Using a flat screwdriver carefully remove two (2) u-nuts from each side of cover plate shown in the image below. Do not remove the four (4) front middle u-nuts.
- *Note: You can also use a pair of pliers to rip out the u-nuts as you will not need them for this installation.*



➤ You do not need to remove the plastic filler trim between the bumper and the grille.

▪ **If you Have a Winch Installed:**

- B. Using a flat screwdriver carefully pry the bumper inner bracket open and remove the back u-nut using another small screwdriver (or a pick) as shown in the image below. Do the same on the other side.
- *Note: You can also use a pair of pliers to pull out the u-nuts as you will not need them for this installation.*



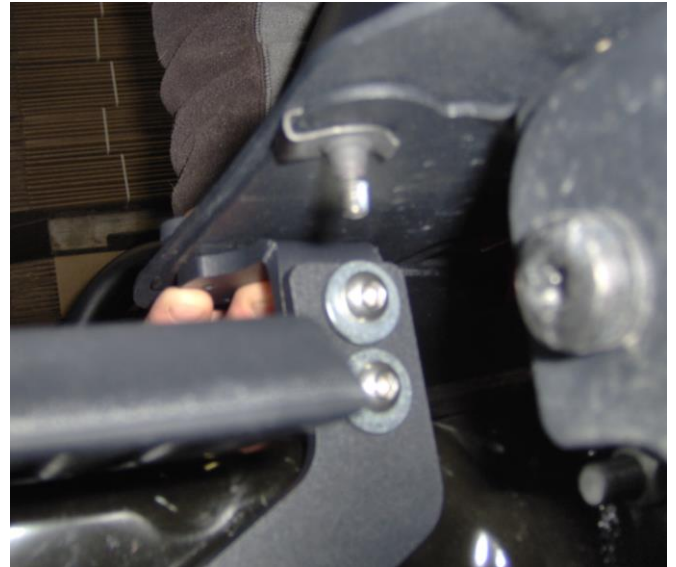
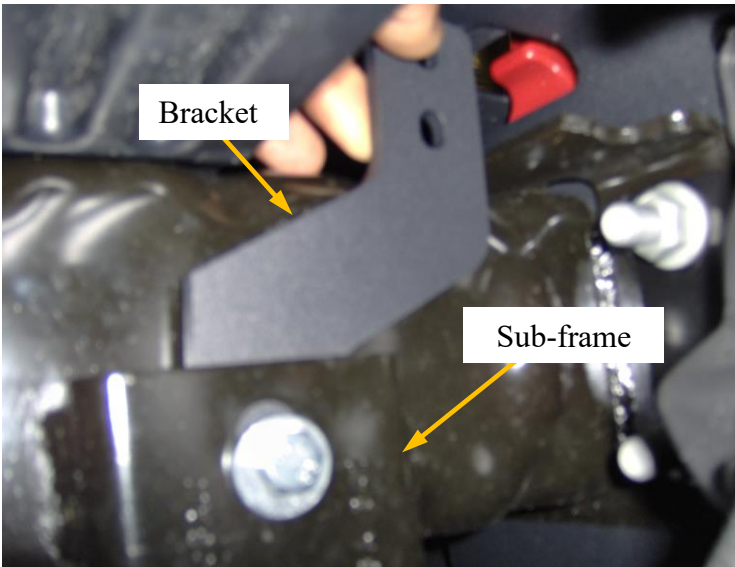
3- Install the Reinforcement Brackets

- A. Slide the bumper reinforcement brackets into the mounting locations on the chassis sub-frame and loosely fasten by hand using the M8 hex bolts and washers provided as shown below.
- Alternatively assemble in place (Note the orientation of driver side and passenger side brackets).

Passenger Side



Driver Side, Disassembled



4- Install the Stinger Bar

- A. Place your Maximus-3 Stinger bar over the mounting locations on the bumper and align the front and back holes to corresponding threaded holes on the reinforcement brackets you installed in step 3.
 - Make sure the reinforcement brackets are loose enough to allow adjustment.
- B. Align and bolt down the bar using the factory M6 torx bolts you removed in step 1-A. You can also use Maximus-3 hardware provided with the kit.
 - *Check alignments and make sure the Stinger bar is seated flat on the mounting surface.*
- C. Now tighten the lower M8 hex bolts of the reinforcement brackets, one (1) on each side.



5- Optional: Install your LED Bar or Auxiliary Lights

- A. Install your Light Brackets using the factory M6 bolts you removed in Step 1 and the two (2) M6 nuts provided, one (1) on each bracket (*you do not need the nuts for non-winch install*).
 - B. Install your LED or auxiliary lights following the instructions provided by the manufacturer of the lights.
- Make sure you adjust the lights and tighten the mounting nuts/bolts.



Your installation is complete. If you have questions regarding this installation, please contact us at customerservice@maximus-3.com, or call 248-6061745